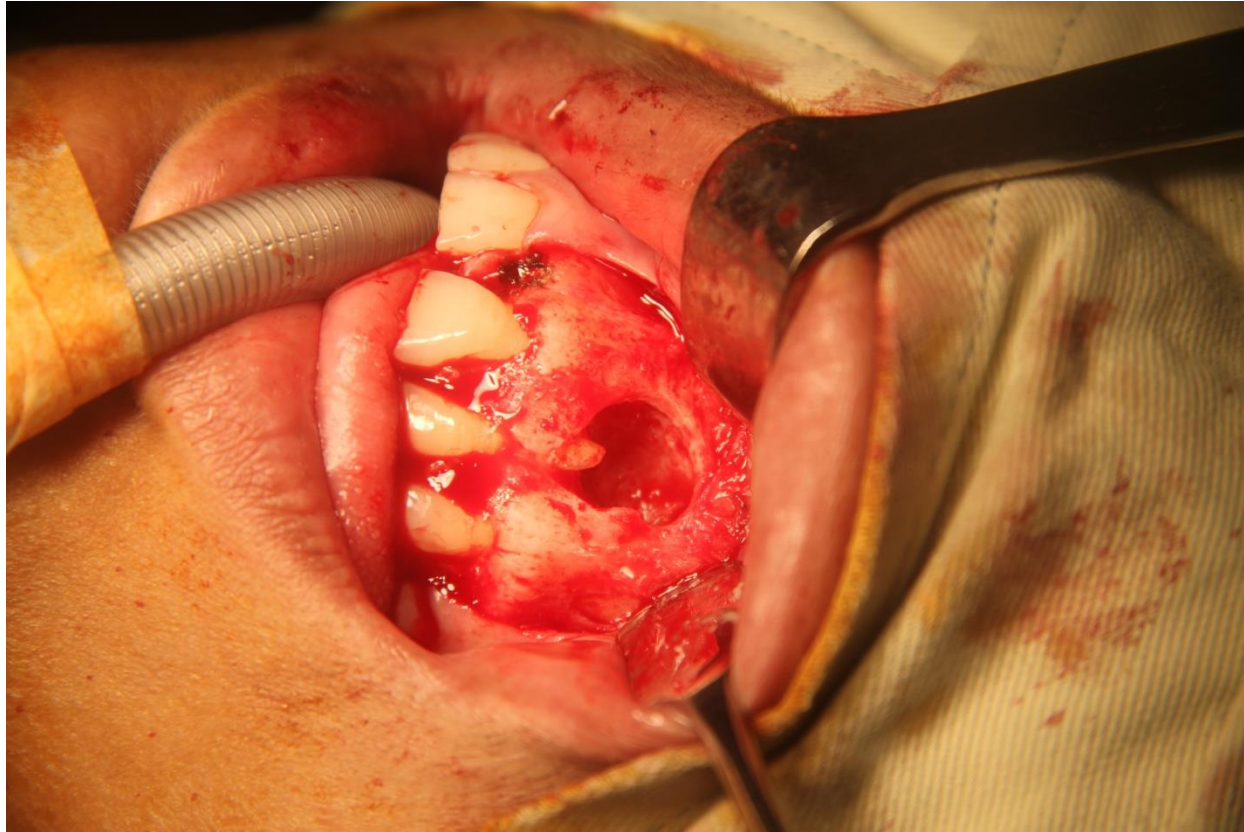


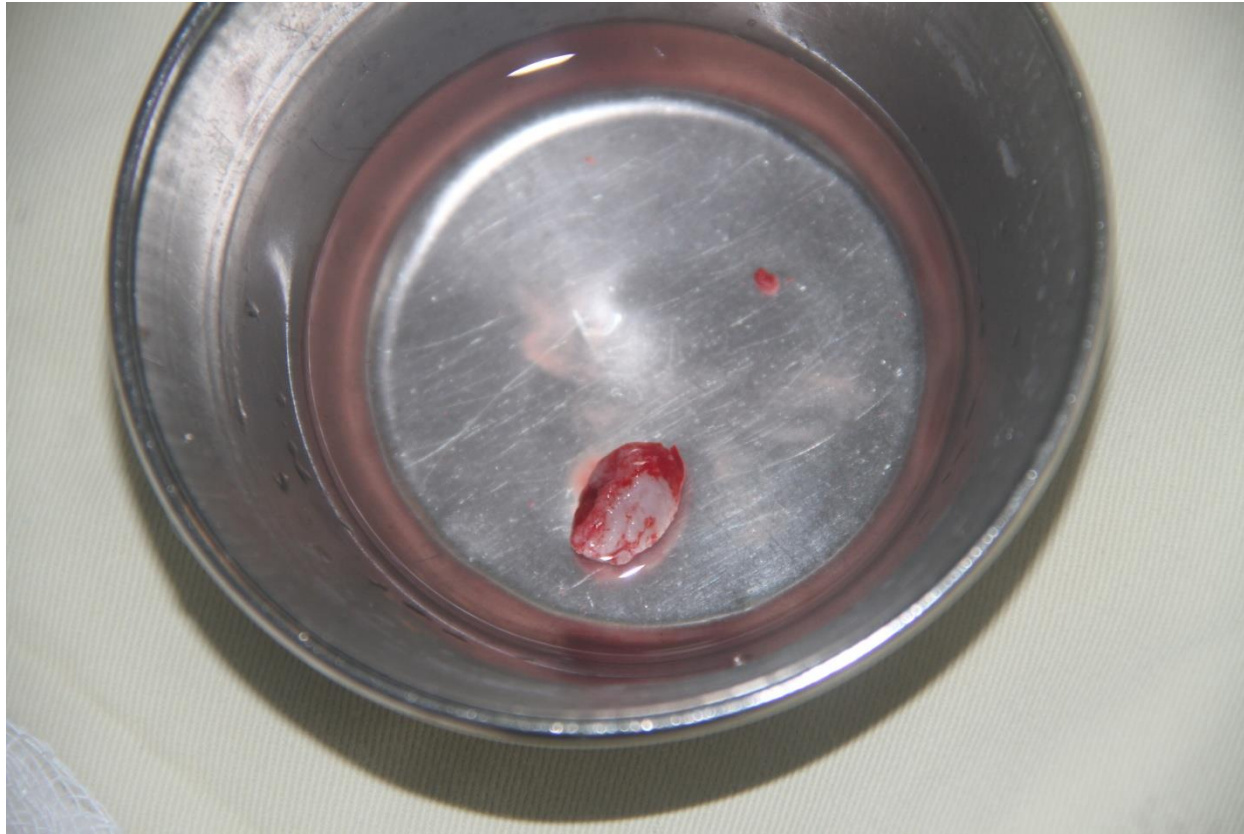
Pre Operative radiograph



Per Operative photograph



Enoculated cyst



Peroperative X ray after RCT seal



Apical closer with MTA



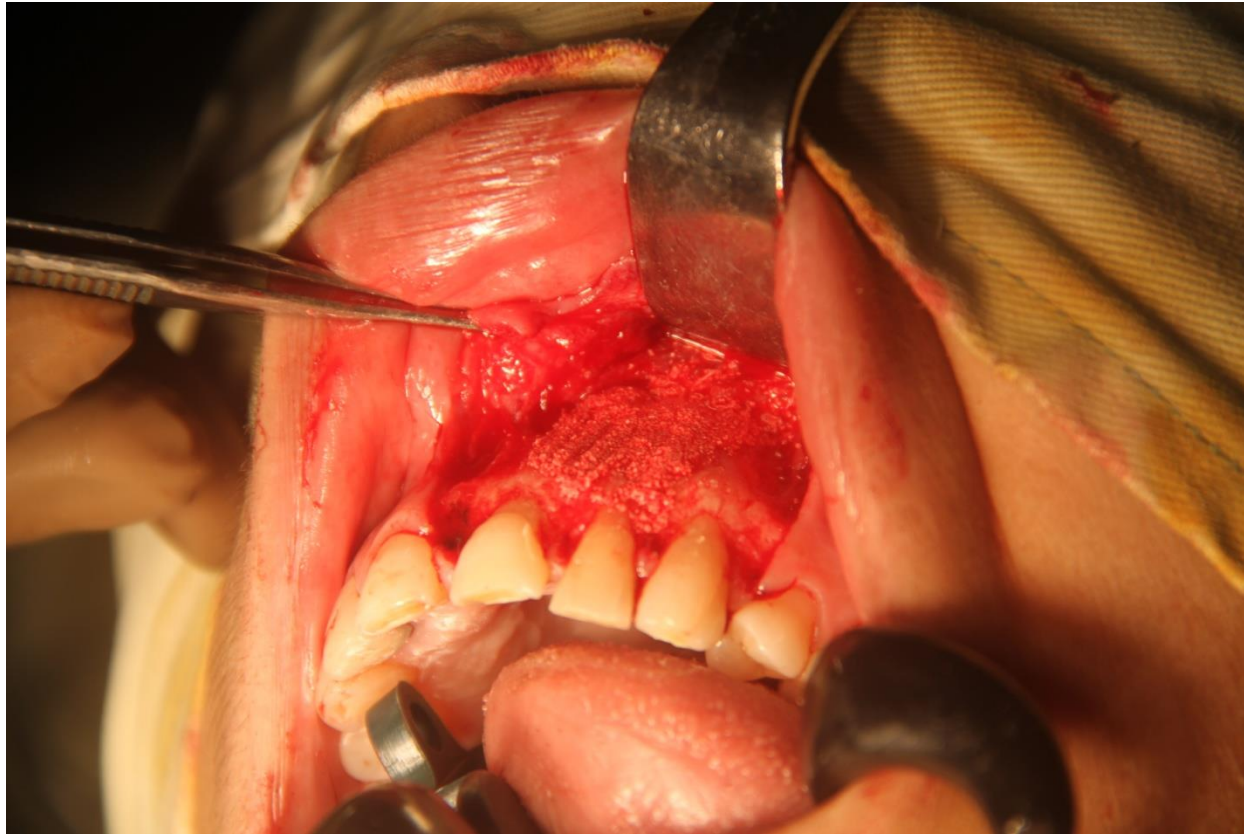
Platelet rich fibrin



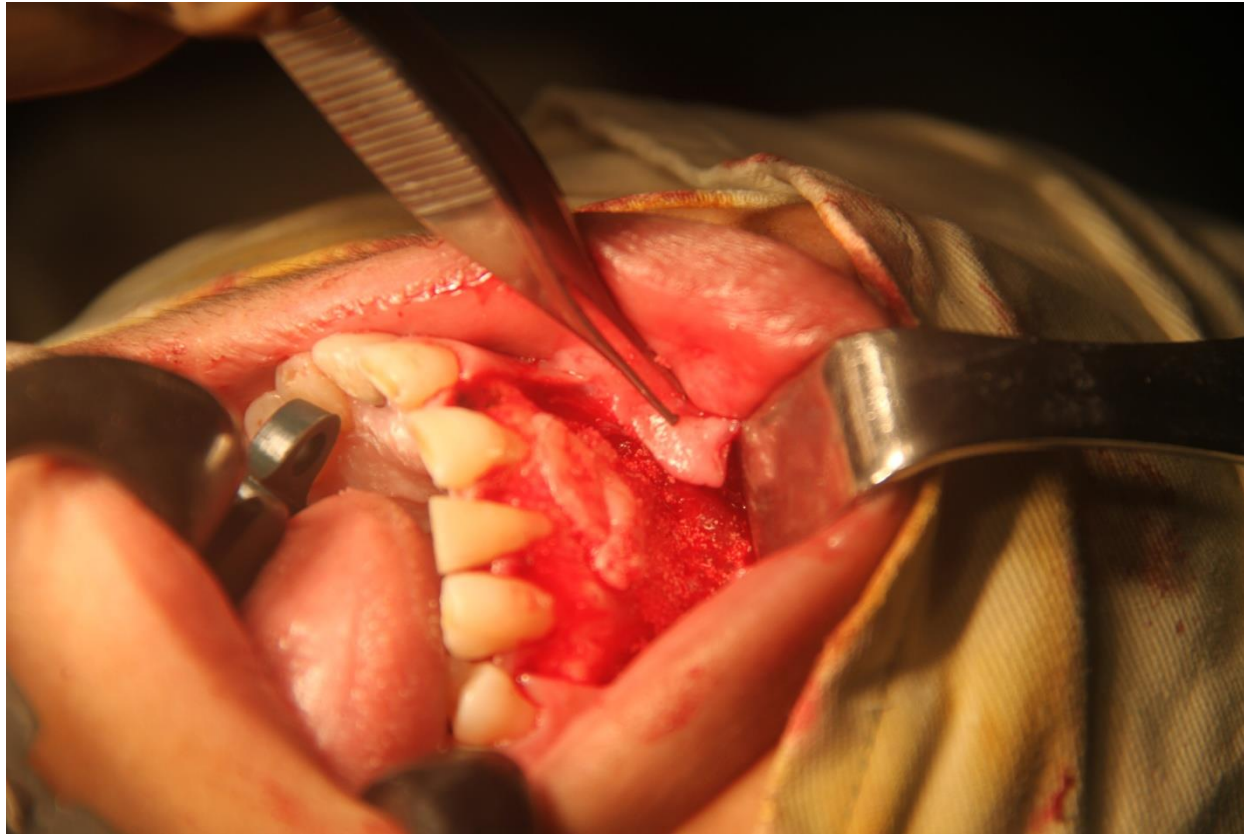
Tricalcium phosphate mixed with PRF



Application of TCP



Application of PRF membrane



Surgical Closer



Post operative X-ray



After 10 days of operation



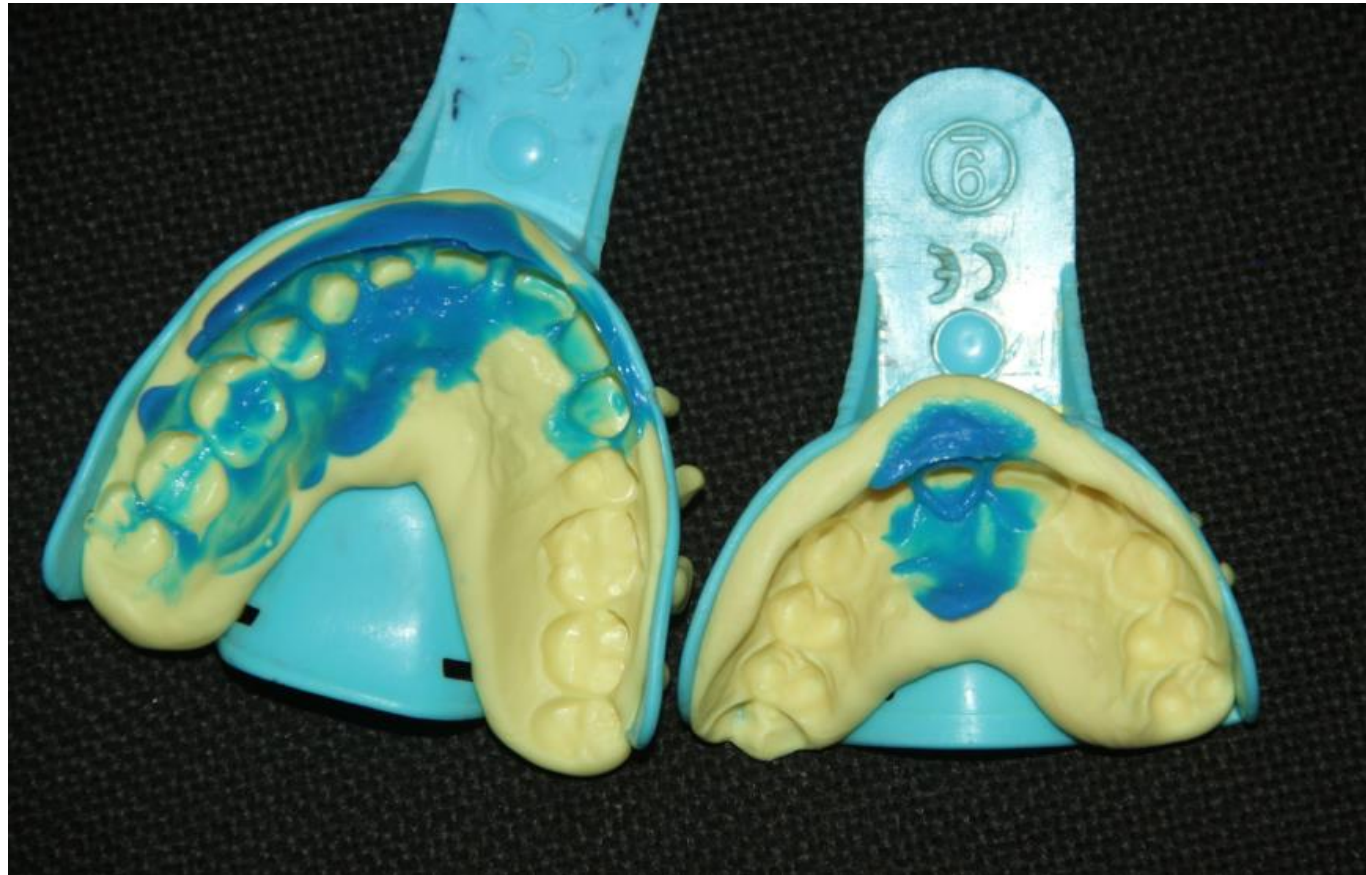
Prosthesis



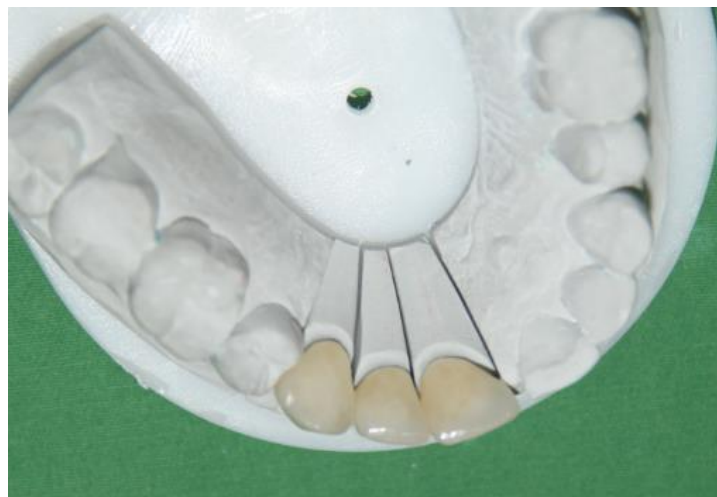
Tooth preparation and temporary crown



Impression



Laboretory work of zirconia crown



Crown insertion







Pre and post operative comperison



Pre and Postoperative Asthetic Comparison



Radiographic evaluation



Pre operative



Per operative



Follow up after 6 month

Radiographic comperison



28/11/19 per operative



Post operative 8/12/19



Xray after 6 month